

BIO-MEDICAL WASTE: WHAT TO THROW WHERE

(Follow colour-coded disposal for infection control and environmental safety.)

Infectious waste (Non plastic)

- Used bandages, cotton soaked with blood and wound dressings
- Human body parts & tissue removed during surgery — hospital use
- Blood bags - blood pouches after transfusion
- Expired or leftover medicines or syrups
- Strong medicines like chemotherapy (cancer) drugs
- Used safety items — disposable masks, gloves, caps, gowns



Yellow

Infectious waste (Plastic items)

- Used plastic items — saline bottles, empty injection bottles
- Used blood bags after blood donation or transfusion
- Used drip sets — IV pipes used for giving medicines or fluids
- Torn plastic or rubber gloves used by doctors or nurses
- Plastic pipes from medical use — tubes used for oxygen, urine collection
- Plastic syringes without needles, IV bottles



Red

Infectious sharp waste

- Broken glass bottles
- Old and expired glass medicines
- Small sealed glass bottles used for injections
- Vaccines and Injection bottles



Blue

Sharp Metal and Chemical Waste

- Waste material from radiation treatments — hospital use only
- Old chemical-heavy medicines — expired injections stored at home
- Loose sharp needles and metal strips — insulin needles, surgical staples
- Broken surgical knives blades and metallic parts



Black

Recyclable Waste

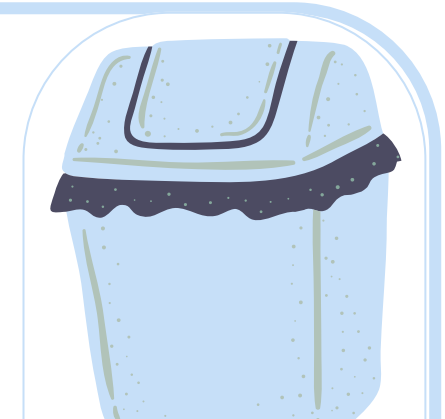
- Used for wet and biodegradable wastes — food scraps like leftover chapati
- Items such as kitchen, plant and animal origin.
- Used eggs, fruits, vegetables and peels, coconut shells, tea bags.
- Used tea powder, left-over food, garden waste, etc.



Green

Infectious & Injurious sharp waste

- Sharp objects — needles, syringes, lancets, scalpels, razor blades, surgical instruments & broken glass,
- Dental instruments — dental drills, dental picks
- Broken metal braces wires — orthodontic wires
- Infusion sets, cannulas, trocars, broaches & acupuncture needles



Puncture proof